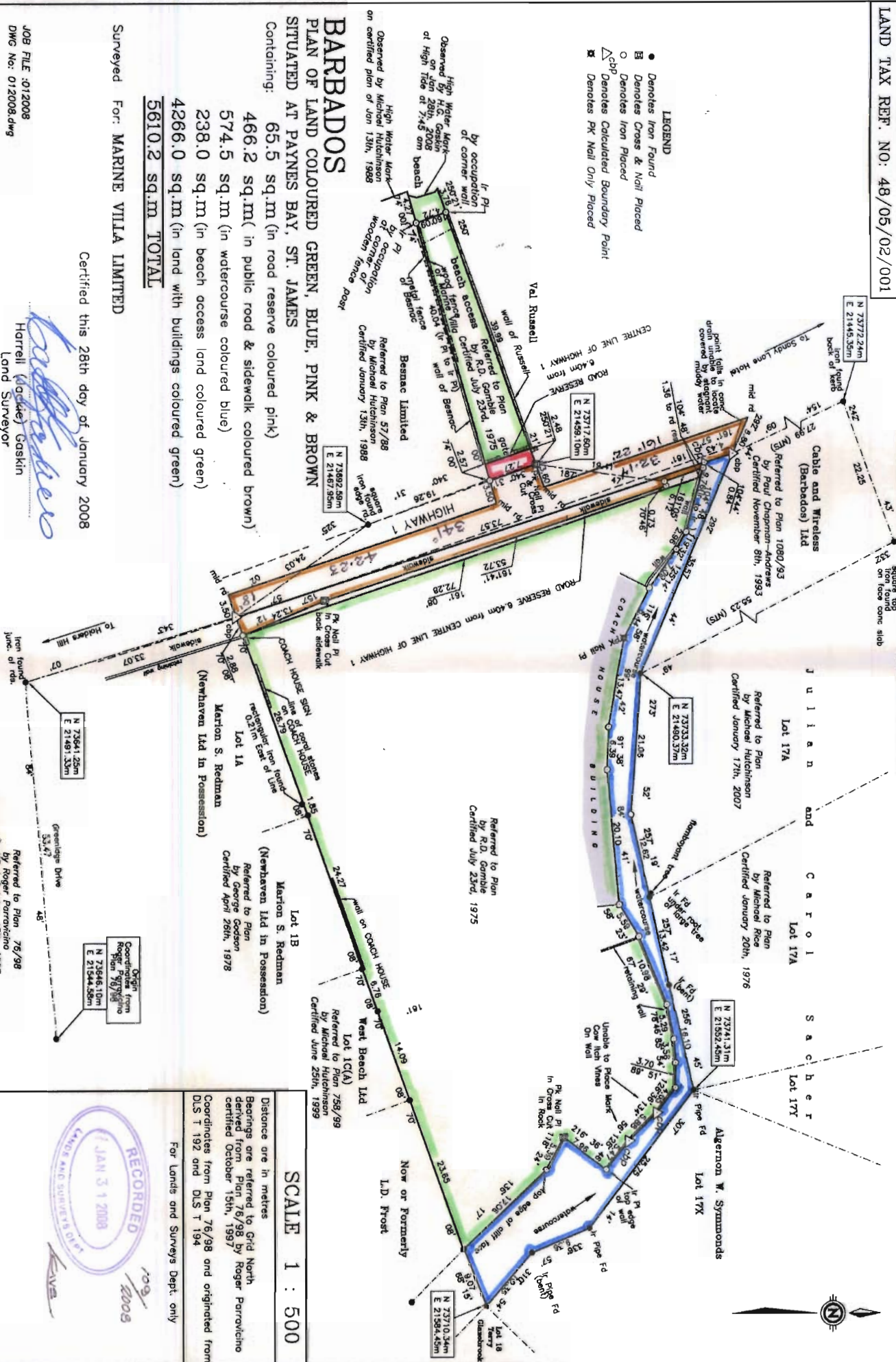


- LEGEND**
- Denotes Iron Found
 - Denotes Cross & Nail Placed
 - Denotes Iron Placed
 - △ C&P Denotes Calculated Boundary Point
 - ⊠ Denotes PK Nail Only Placed



BARBADOS

PLAN OF LAND COLOURED GREEN, BLUE, PINK & BROWN
SITUATED AT PAYNES BAY, ST. JAMES

Containing: 65.5 sq.m (in road reserve coloured pink)
 466.2 sq.m (in public road & sidewalk coloured brown)
 574.5 sq.m (in watercourse coloured blue)
 238.0 sq.m (in beach access land coloured green)
 4266.0 sq.m (in land with buildings coloured green)
5610.2 sq.m TOTAL

Surveyed For: **MARINE VILLA LIMITED**

Certified this 28th day of January 2008

JOB FILE :012008
 DWG No: 012008.dwg

Harrell Gaskin
 Harrell Gaskin
 Land Surveyor

SCALE 1 : 500

Distance are in metres
 Bearings are referred to Grid North
 derived from Plan 76/98 by Roger Parroviceho
 certified October 15th, 1997
 Coordinates from Plan 76/98 and originated from
 DLS T 192 and DLS T 194

For Lands and Surveys Dept. only

